



NOAA
FISHERIES

Council Request: Discards for Greater Amberjack, Gag, Red Grouper, and Red Snapper

July 7-8, 2022

The Council request:

“The Council requests that these data be presented **annually** by **species** and **directed fleet** (e.g., commercial vertical line, commercial longline, charter for-hire, private vessels) and **fishing sector** (i.e., commercial, for-hire recreational, private recreational), and should be presented in the current Marine Recreational Information Program effort data currency (i.e., Coastal Household Telephone Survey or Fishing Effort Survey, as applicable). The Council would like to review these data for the last 20 years, or **as far back in time as the available data allow.**”

“The Council thinks that reviewing these data will help improve its understanding about the magnitude of these discards, differences between directed fleets, and measures to reduce future discards for these species. Further, greater amberjack and gag grouper are currently overfished and undergoing overfishing (SEDAR 70, 2021; SEDAR 72, 2021), and these data may help the Council to rebuild those stocks while continuing to allow fishery access to stakeholders.”

Center Response

- “We can provide the data as they are provided for the assessments. We clarified with Council staff that the request will be satisfied by the collation of data available in the most recent assessments for each species. In some instances, fleets or fishing sectors are pooled, and no further separation of those data will be available.”

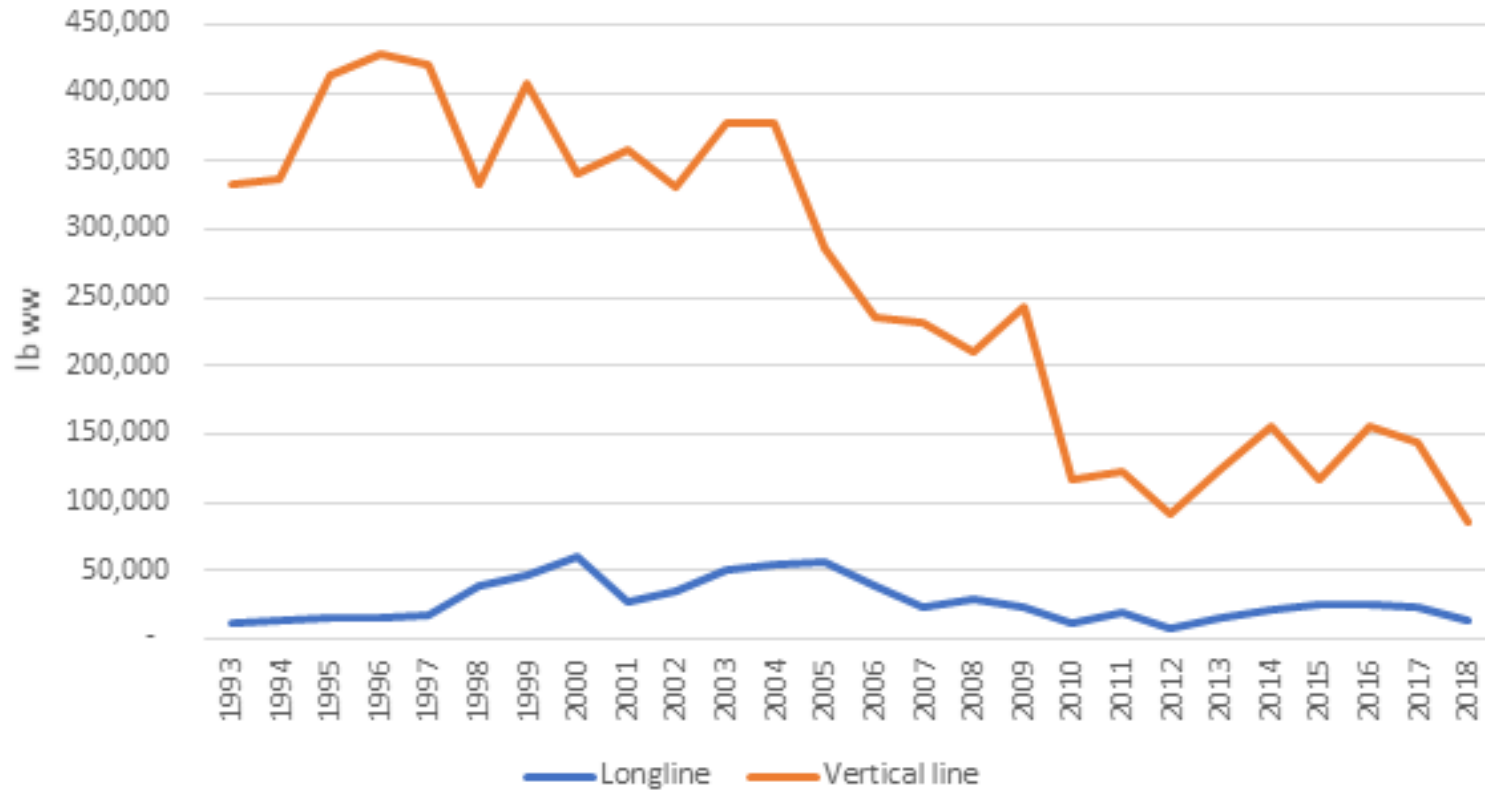
Background

- The data were pulled by each assessment analyst from their assessment input files (not the model estimates) or working papers and cross-checked with the assessment report.
- The units or fleet structures may be different across assessments, but we have tried to group the commercial and recreational modes together.
- Terminal years vary depending on when the assessment was completed.

Greater Amberjack

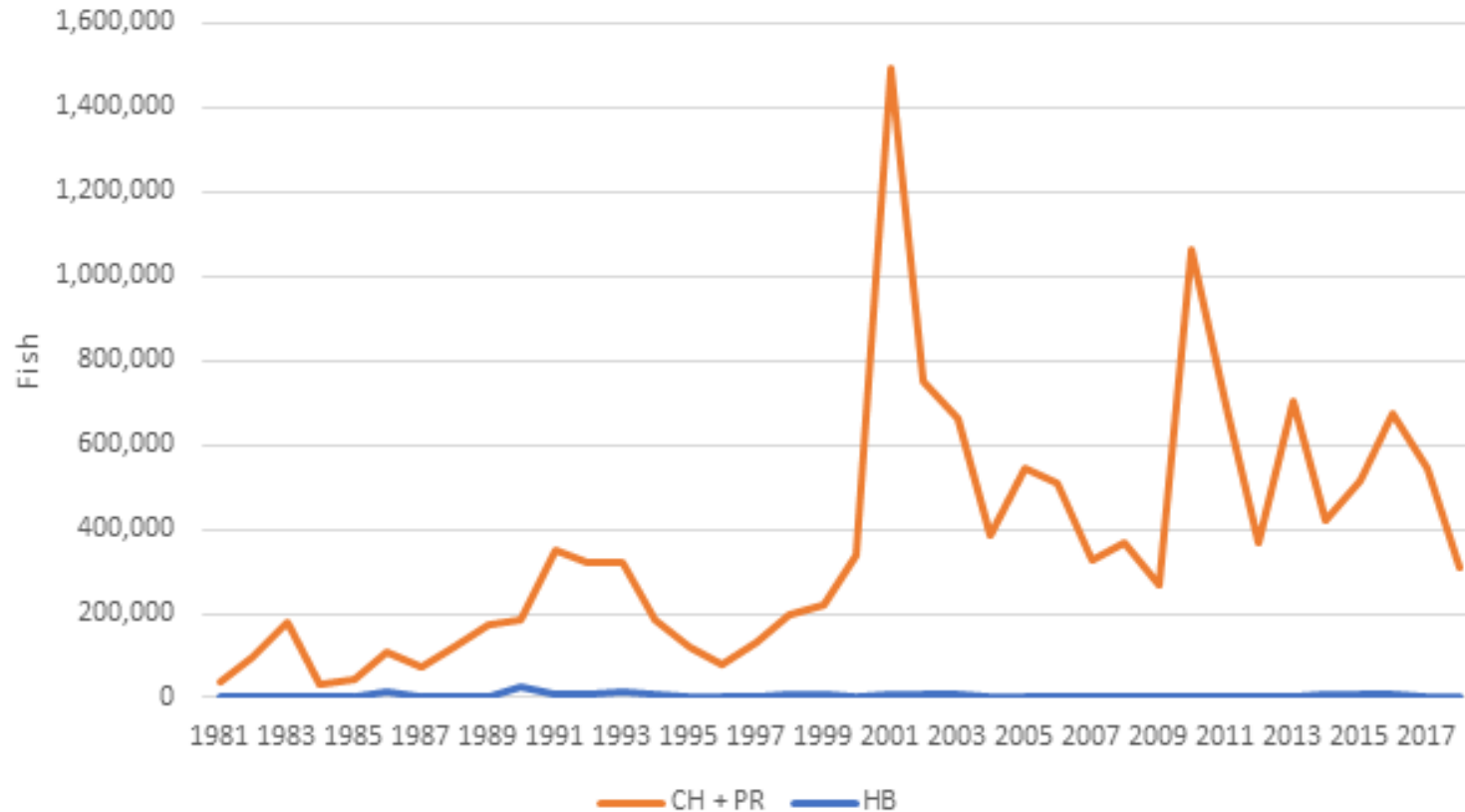
- Commercial discards from the vertical and longline fleets from 1993 to 2018 were used in the SEDAR 70 base model.
 - The units are pounds whole weight, though it was provided in a working paper in both weight and numbers.
- Recreational discards were input as a combined charter boat and private boat fleet, as well as a headboat fleet.
 - Data were available from 1981 to 2018 and used in the SEDAR 70 base model.
 - All recreational discards are in numbers and in MRIP-FES or Southeast Region Headboat Survey (SRHS) units.

Greater Amberjack Commercial Discards



NOAA
FISHERIES

Greater Amberjack Recreational Discards



NOAA
FISHERIES

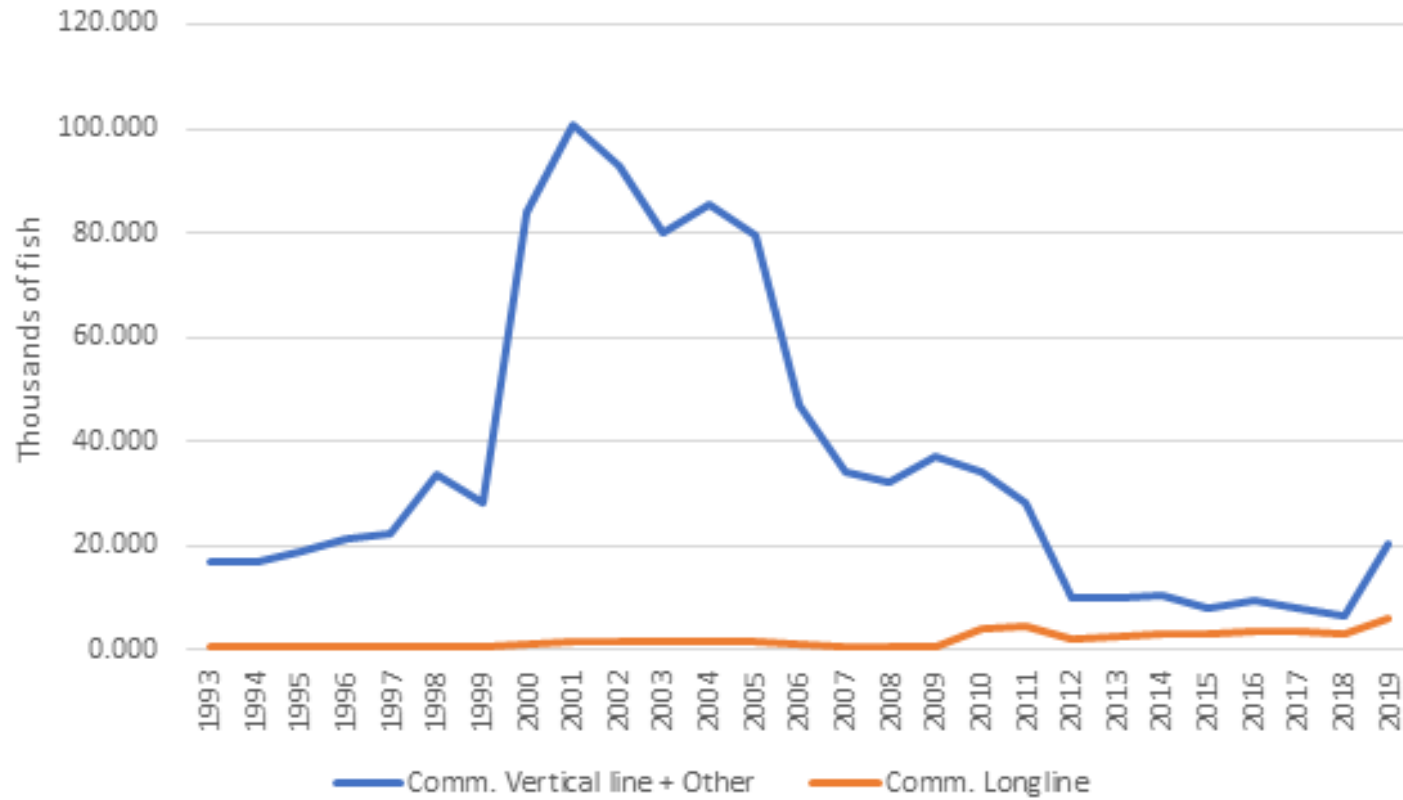
Gag

- Commercial discards from the vertical and longline fleets from 1993 to 2019 were used in the SEDAR 72 base model.
 - The units are 1000s of fish (Table 4 and Figure 3).
- The Gag recreational discards from 1993 to 2019 were also used in the SEDAR 72 base model.
 - The units of 1000s of fish and presented in MRIP-FES and SRHS units.



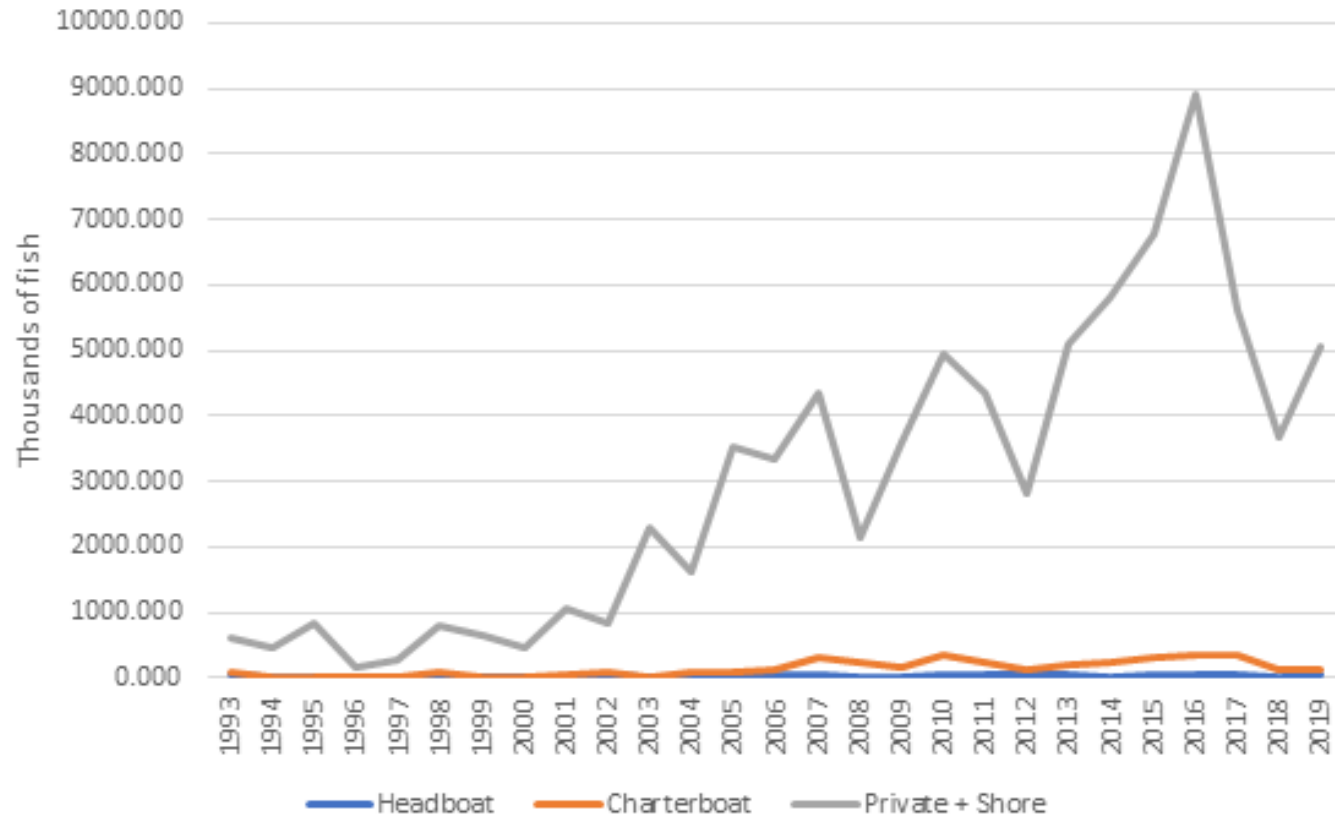
NOAA
FISHERIES

Gag Commercial Discards



NOAA
FISHERIES

Gag Recreational Discards



NOAA
FISHERIES

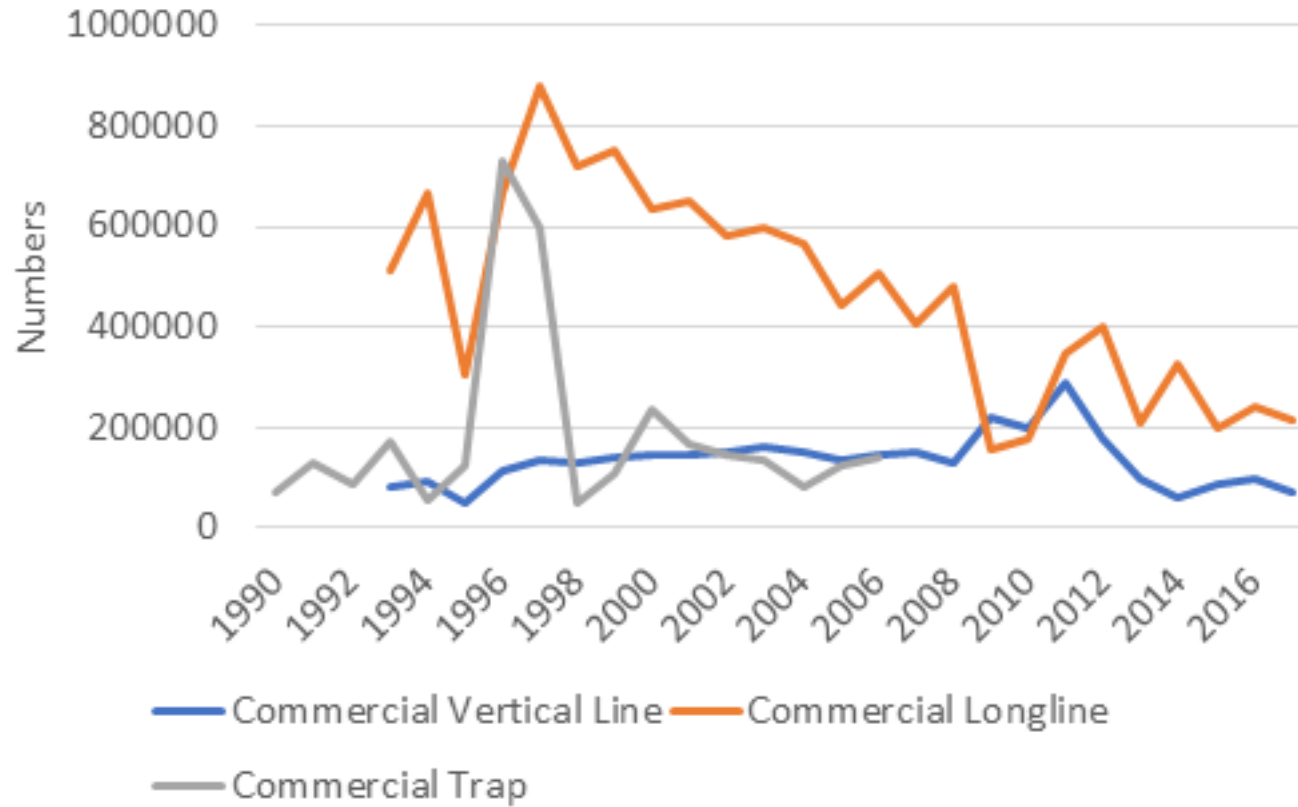
Red Grouper

- For SEDAR 61, Red Grouper commercial discards are available from 1990 to 2006 for trap gear.
- Commercial vertical line and longline discards are available from 1993 to 2017
- Recreational discards are available from 1981 to 2017.
- All SEDAR 61 discards are in numbers of fish.



NOAA
FISHERIES

Red Grouper Commercial Discards



NOAA
FISHERIES

Red Grouper Recreational discards

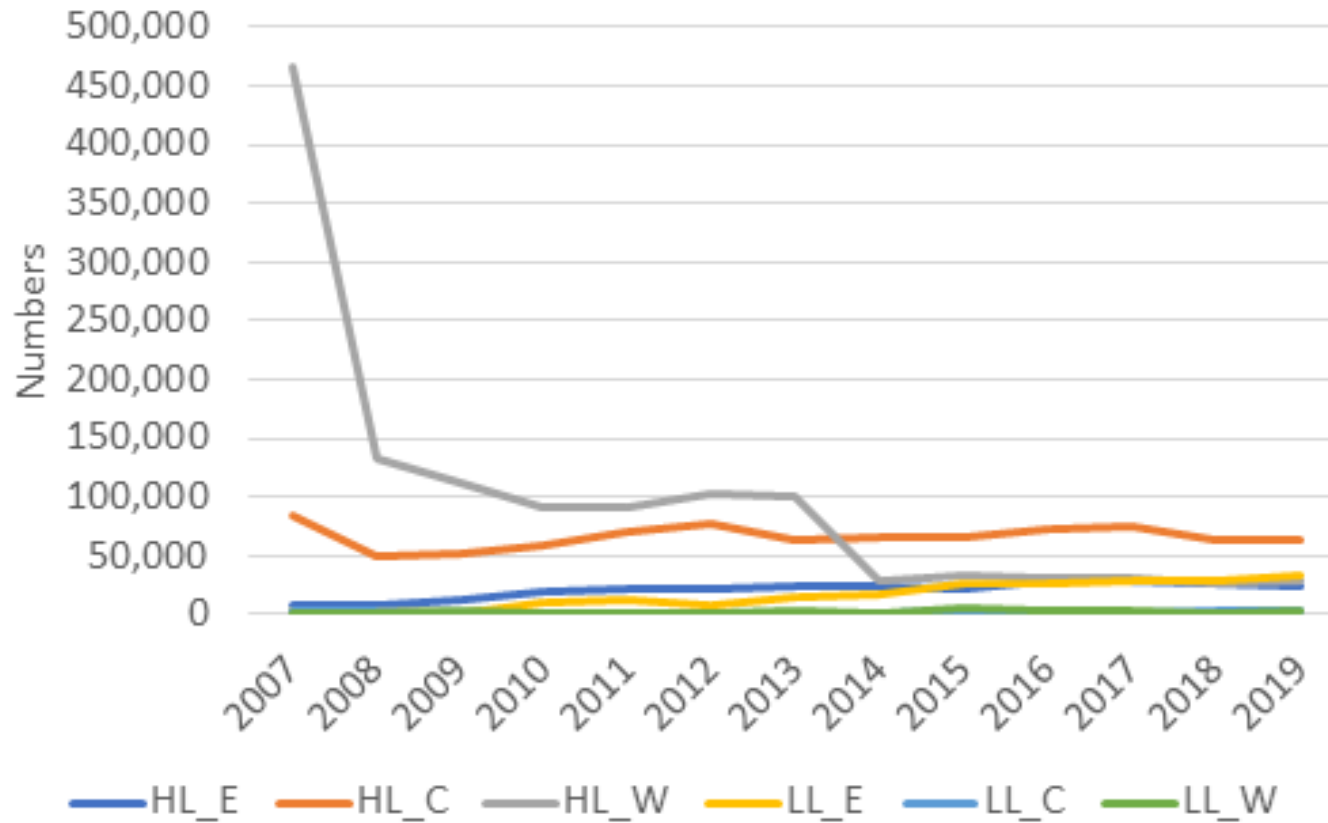


NOAA
FISHERIES

Red Snapper – preliminary data

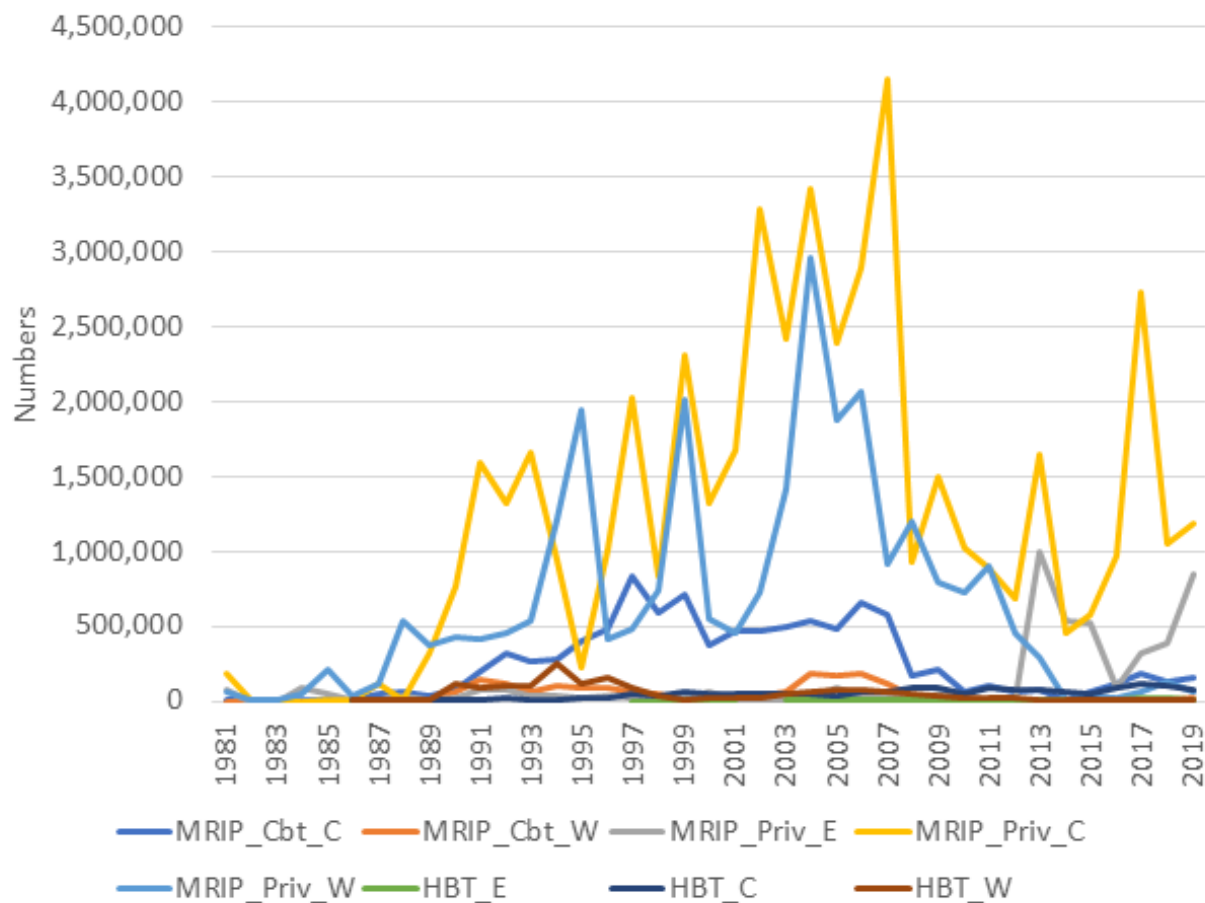
- The SEDAR 74 data for Red Snapper are not yet finalized.
- There are three areas of the stock ID for SEDAR 74: Western, Central, and Eastern.
- Commercial discards are available from 2007 to 2019
- Recreational discards are available from 1981 to 2019, and are reported in MRIP-FES, SRHS, or state surveys calibrated to MRIP-FES units.
- Closed season discards are available from 1997 to 2019.
- All Red Snapper discards are reported in numbers.

Red Snapper Commercial Discards



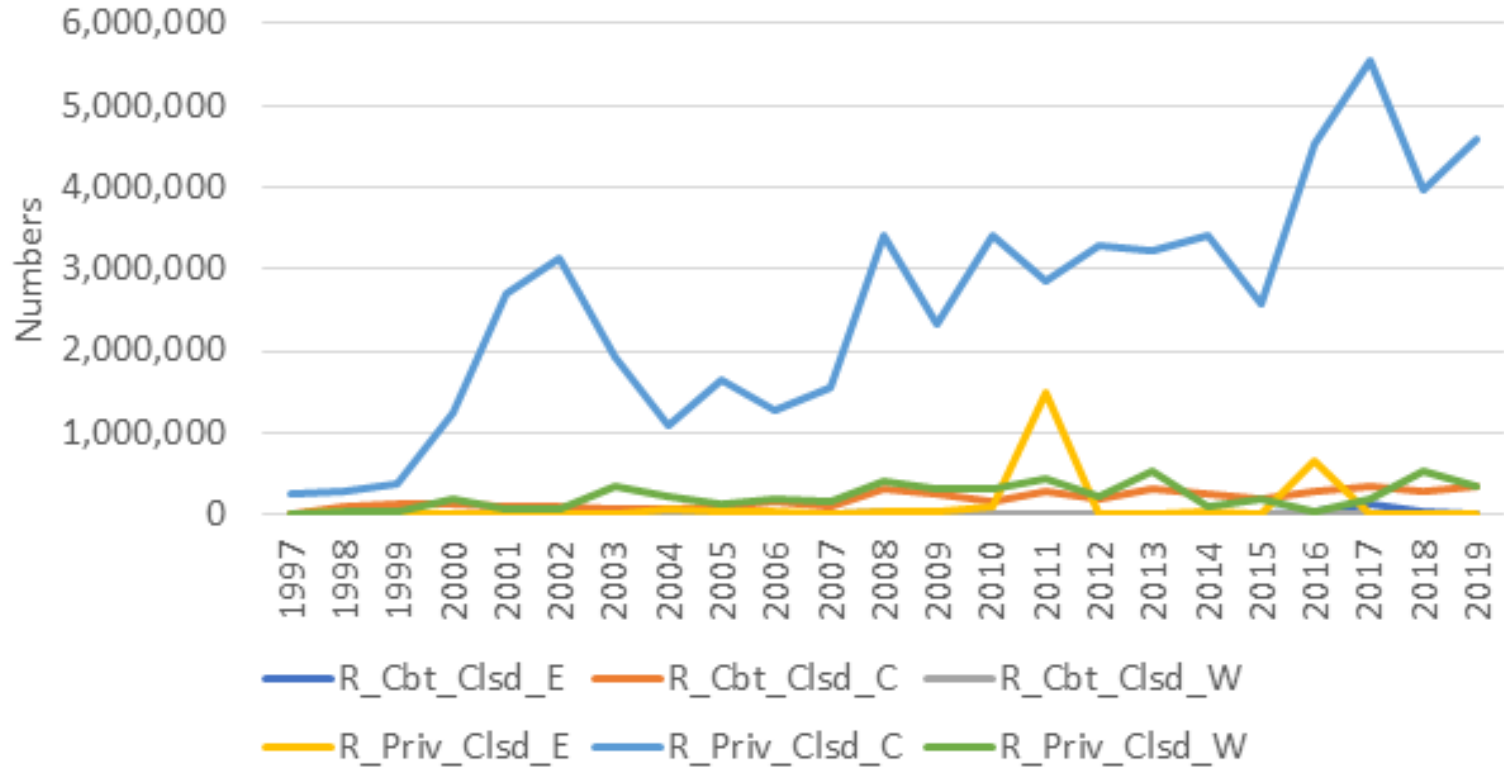
NOAA
FISHERIES

Red Snapper Recreational Discards



NOAA
FISHERIES

Red Snapper Closed Season Discards



NOAA
FISHERIES

- Thanks to Lisa Ailloud, Nancie Cummings, LaTreese Denson, and Skyler Sagarese for pulling assessment data.